



March 5, 2019

Getting Started with Healthcare Analytics for Frontline HR Employees

Victoria Mummau, Regional Vice President





A healthcare analytics and services company that focuses on improving systems to support **personalized, patient-centered care.**

We help health plans, hospitals, physician practices and employers **better collaborate and align** to lower cost, improve outcomes and restore the Joy of Medicine.



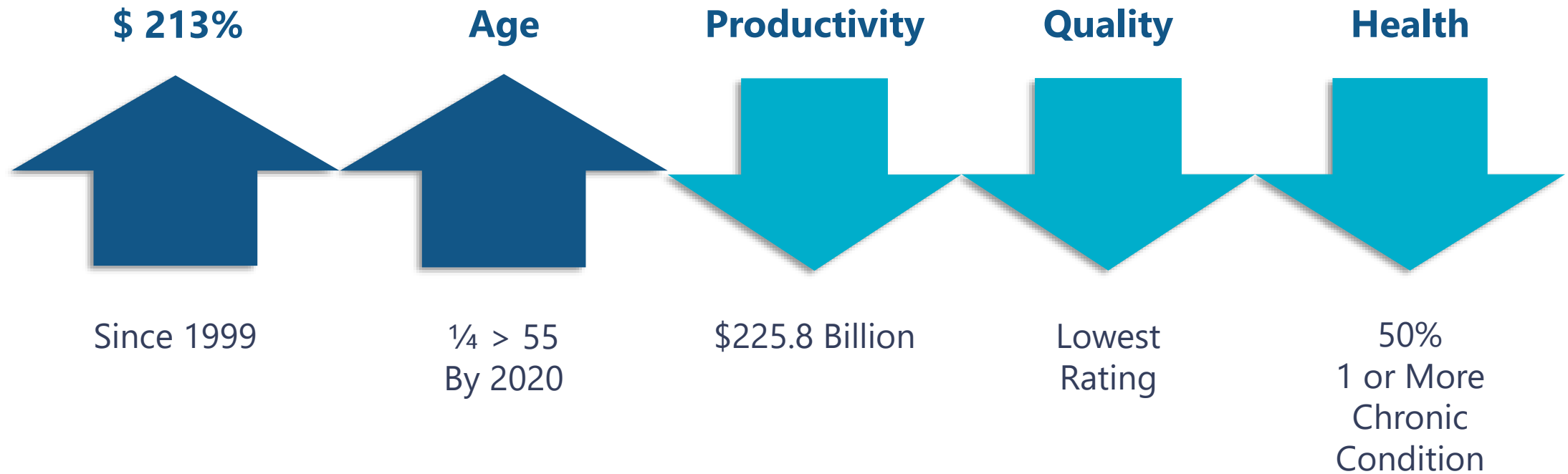
Agenda

- **Why We Care About Healthcare Analytics**
- **Lucy's Story**
- **Tailored Insights and Recommendations**
- **Quick Start Guide**

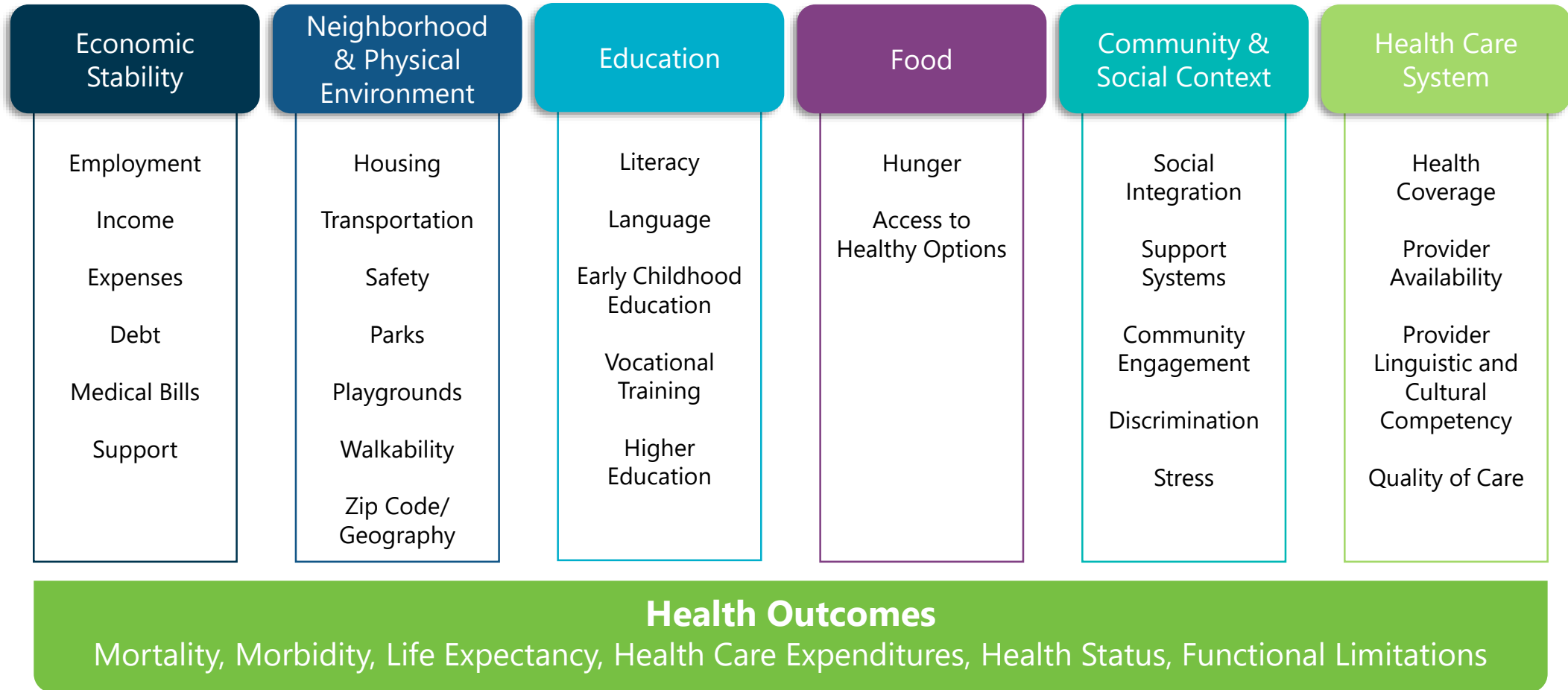
Getting Started with Healthcare Analytics for Frontline HR Employees

Why We Care about Healthcare Analytics

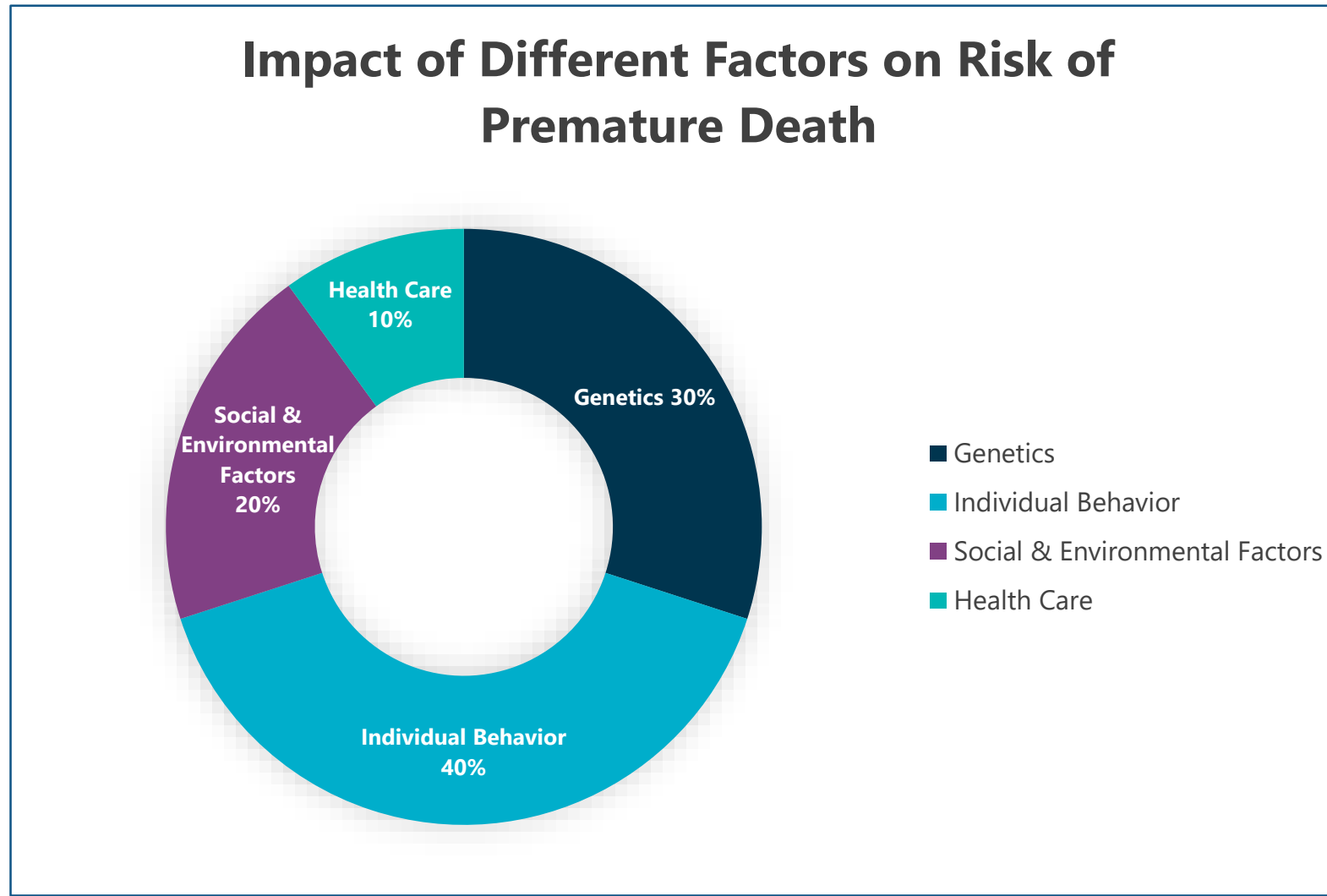
Diminishing Value, Yet Escalating Costs for Employers



What are social determinants of health?



Why do social determinants of health matter?



What are SDoH prevalence & costs?

- 68% of patients have 1+ social determinant challenge
- 20% are at high-risk of social determinant challenge
- 57% have a moderate-to-high risk of financial insecurity, isolation, housing insecurity, transportation, food insecurity and/or health literacy
- Patients with high SDoH risk are 20 times more likely to miss medical appointments
- 50+% of hospital readmissions tied to SDoH

The Diabetes & Prediabetes Epidemic

- 30+ million Americans with diabetes
- \$327 billion Annual costs of diagnosed diabetics
- \$1 of every \$7 Healthcare spend on diabetes and complications
- 1+ in 3 Adults with prediabetes
- 90% Prediabetic adults who don't know their condition
- 70% Prediabetic adults who will develop diabetes
- 12% Pennsylvania adults with diabetes
- 36% PA adults with prediabetics
- \$9.3 billion PA direct medical costs for diagnosed diabetics
- \$3.5 billion PA indirect costs for lost productivity

Getting Started with Healthcare Analytics for Frontline HR Employees

Lucy's Story

Meet Lucy, a typical rising-risk employee

With 33+% of Americans prediabetic, employers are concerned that more of their employer population will become high-cost, chronically or catastrophically-ill diabetics.

Lucy

- 42-year old mother of two
- Prediabetic
- Has an employer-sponsored health plan
- Needs ongoing engagement, education and support to stop her condition from progressing



Lucy's Care Team



Dr. Todd Becker
*Granite Physicians
Be Well Health System*



Janelle
*Quality Manager
Be Well Health System*



Jaime
*HEDIS® Director
Allegiant Health Plan*



Judy
*Population Health Clinician
Allegiant Health Plan*



Julie
*Nutritionist
Allegiant Health Plan*



Chase
*VP, Human Resources
Lightning Laser*

Meet Lucy's Care Team: Dr. Todd Becker

Dr. Todd Becker
Granite Physicians
Be Well Health System



- Pre-visit planning:
 - Lucy was on Allegiant Health Plan's list of members at-risk for metabolic syndrome
 - Dr. Becker ordered fasting blood glucose test
- Dr. Becker and his team use the shared analytics platform to monitor Lucy's progress on her care plan

Meet Lucy's Care Team: Janelle

Janelle
Quality Manager
Be Well Health System



- Works with physician practices to close HEDIS[®] care opportunities
- A focus is remedying a systemic gap in identifying and managing adults with metabolic syndrome
- Janelle uses the shared analytics platform to support identifying and closing preventive care gaps for patient populations

Meet Lucy's Care Team: Jaime

Jaime
HEDIS® Director
Allegiant Health Plan



- Works to cost-effectively improve plan's HEDIS® performance by simplifying quality measure reporting
- A focus is closing HEDIS® measures related to diabetes
- Jaime uses the shared analytics platform to identify sub-populations of members with gaps in care and engage their primary care physicians

Meet Lucy's Care Team: Judy

Judy

*Population Health Clinician
Allegiant Health Plan*



- Works with high-risk and rising-risk members
- A focus is closing the plan's 25 selected HEDIS® quality measures
- Judy uses the shared analytics platform to monitor Lucy's progress on her care plan including meeting with a nutritionist

Meet Lucy's Care Team: Julie

Julie
Nutritionist
Allegiant Health Plan



- Works with prediabetic members like Lucy to create personalized care plans
- Julie uses the shared analytics platform to monitor Lucy's progress on her care plan

Meet Lucy's Care Team: Chase

Chase

*VP Human Resources
Lightning Laser*



- A key focus is engaging rising-risk employees and preventing the costs, productivity and lifestyle impacts of chronic illness
- Offers virtual health education and nutritional counseling programs and semi-annual onsite biometric screenings
- Chase uses the shared analytics platform to monitor out-of-network utilization, preventable emergency department visits and prevalence of diabetes and prediabetes

Getting Started with Healthcare Analytics for Frontline HR Employees

Tailored Insights & Recommendations

Readily Available Employer Insights & Recommendations

The screenshot displays the Theon Platform dashboard. At the top, there is a navigation bar with the Theon logo, a search bar, and navigation tabs for Home, Tasks, Insights, and Recommendations. Below the navigation bar is a 'Welcome' section with a 'Last Data Refresh: 1/2/34' indicator. The main content area is divided into four primary sections: Plan Overview, Medical, Pharmacy, and Population Health. Each section has a representative icon and a brief description of the data it provides. Below these sections are two columns: 'Insights' and 'Highlights'. The 'Insights' section features a card titled 'Prediabetes may be a problem for your population' with a sub-section for 'Recommendations' containing a table. The 'Highlights' section shows 'Insights: 1' and 'Open Tasks: 0', along with a 'Population Measure Changes' list.

Plan Overview
Key metrics across all your benefit plans including cost, and enrollment.

Medical
Explore data specific to your medical benefit plans including cost drivers, claim types, and network utilization.

Pharmacy
Explore data specific to your pharmacy benefit plans including costs, prescription counts, top therapeutic classes, and pharmacies.

Population Health
Explore data specific to your population including cost, risk stratification, and clinical conditions.

Insights

Prediabetes may be a problem for your population
Jan

Roughly more than 10% of your population has one or more of the comorbidities (Obesity, Hyperlipidemia and/or Metabolic Syndrome) that are commonly associated with diabetes. This is estimated to cost you \$1.5 million over the next year.

Recommendations

RECOMMENDATION NAME	GOAL
Diabetes Awareness Activities	Consider educating your population on the importance of proactively managing diabetes risk...
Weight Management Program	Obese and overweight members are at highest risk of becoming diabetic. Consider investing i...
Nutritional Counseling	Provide ongoing dietary analysis and counseling programs can help employees make healthy ...
Health Risk Assessment & Biometric Screening Campaigns	If you're invested in HRA and biometric screening programs, consider campaigns and remind...

Highlights

Insights: 1
View All

Open Tasks: 0
View All

Population Measure Changes

- Currently Enrolled -10.1%
- Not Seen by PCP in 12 Months -15.0%
- Weighted Risk Score +22.4%
- High Cost Members +53.8%

Readily Available Aggregated Data for Employers

Population Measures



25,115
Currently Enrolled



7,931
Not Seen by PCP in
12 Months



2.38
Weighted Risk Score



340
High Cost Members



46
% Male



54
% Female

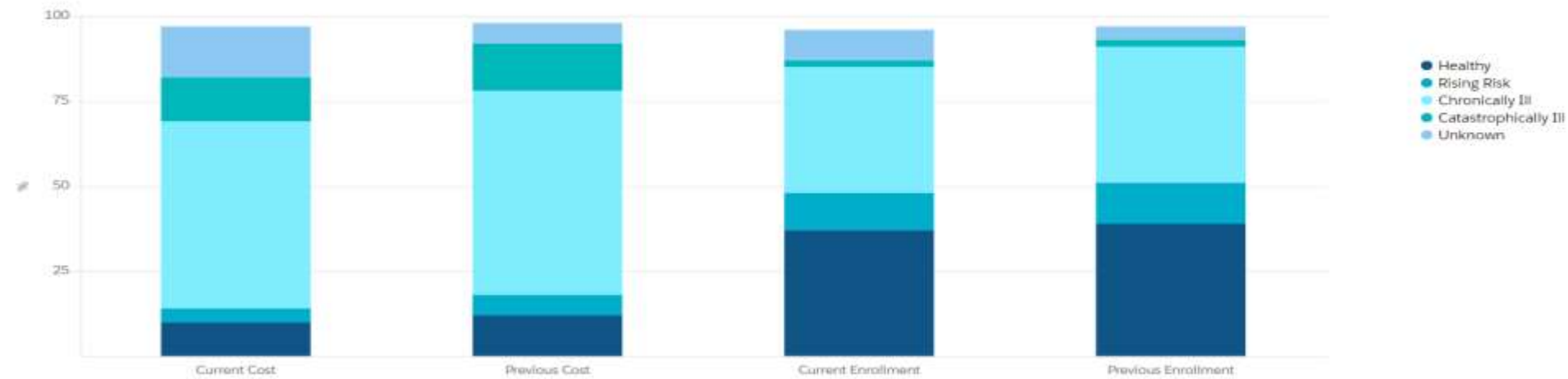


42
Average Age

Risk Categorization of Current Enrollment

Current Active Enrollment
25.37K

Plan Paid
\$190.10M



Filters

Region
All

Relationship Type
All

Gender
All

Age Range
All

Risk Categories
All

Clinical Markers
All

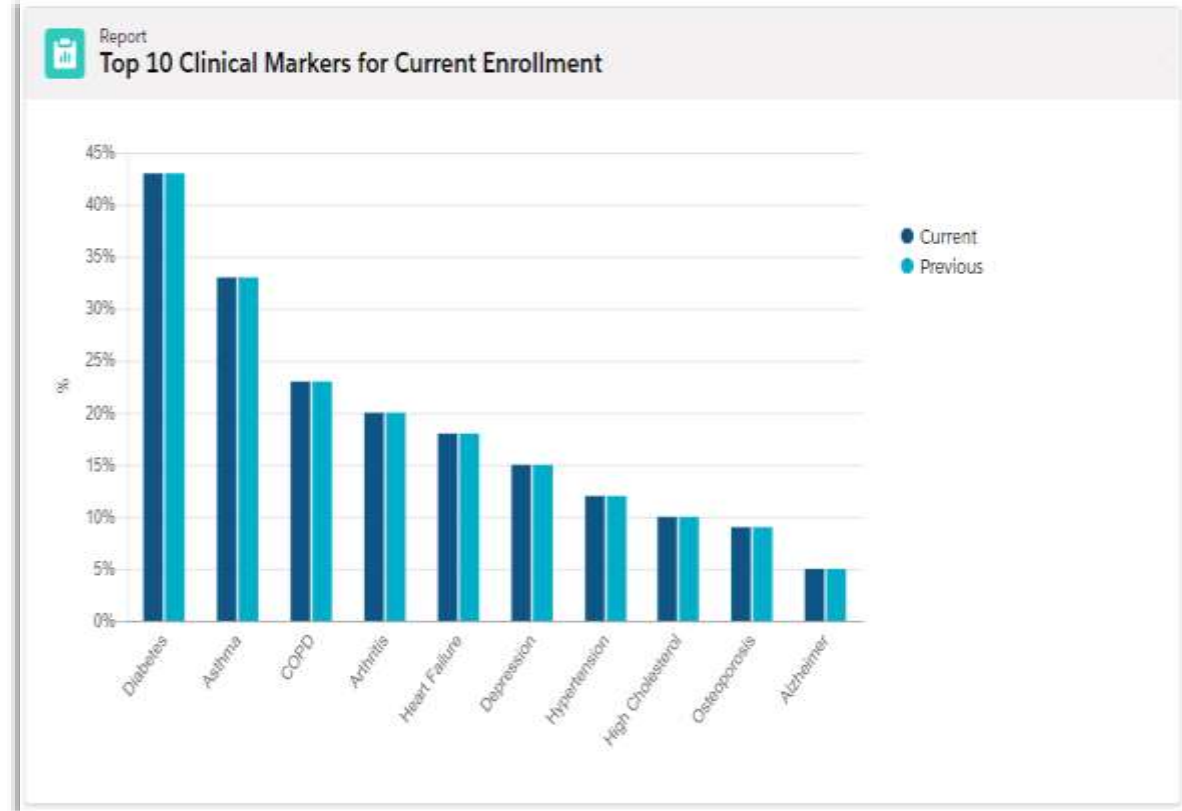
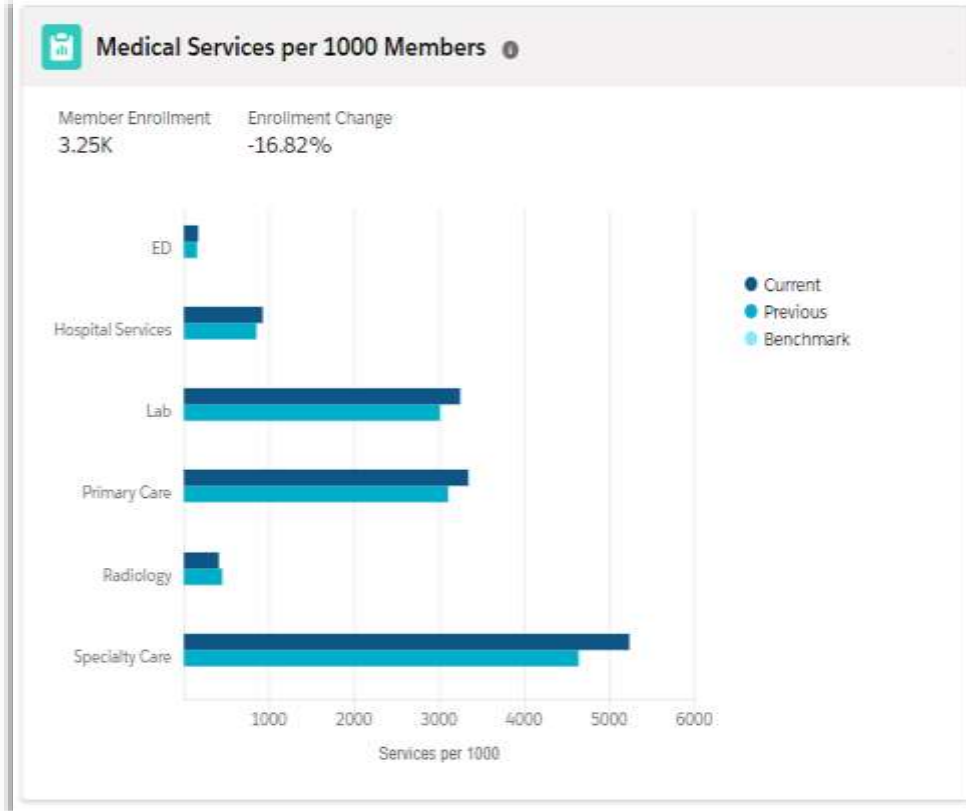
Clinical Marker Count
All

Enrollment Time Range
All

High Cost Member
All

Clear Filters

Readily Available Aggregated Data for Employers



Quickly Identify and Prioritize Cost Drivers and Actionable Information for Intervention

Immediate and Actionable Data and Insights



In out-of-network utilization



Employees who visited the ER in past year but not a PCP



High-risk employees who hadn't seen PCP in past 12 months



In retail prescriptions that could be refilled using less expensive mail-order channels



Employees using more expensive brand name prescriptions



Pre-diabetic employees



Employees with open care opportunities

Getting Started with Healthcare Analytics for Frontline HR Employees

Quick Start Guide

Healthcare Analytics: Quick Start Guide

- Start with your health plan(s)
 - 8 critical questions
 - View full list of questions at:
<https://www.geneia.com/blog/2016/december/eight-questions-to-ask-your-health-plan-about-employer-reporting>
- Prioritize
- Collaborate with your company's health plan(s)
- Look ahead

Questions

Legal Notice

© Copyright Geneia LLC 2019
Geneia LLC P.O. Box 77618 Harrisburg, PA 17177-2618
Produced in the United States

Geneia, Theon, Care Collaborator, Care Optimizer, Care Engager, and Care Modeler are registered trademarks of Geneia LLC.

A current statement of our intellectual property and Terms of Service is available on the web at:
www.geneia.com

This document is for informational purposes only and is current as of its publishing date; it may be changed by Geneia LLC at any time.

Any individuals or medical information relating to them presented in this document are fictional and not intended to represent or relate to any specific person. Any similarities to any real person are purely coincidental and unintentional.

THE INFORMATION IN THIS DOCUMENT IS PROVIDED "AS IS" WITHOUT ANY WARRANTY, EXPRESS OR IMPLIED, INCLUDING WITHOUT ANY WARRANTIES OF PARTICULAR PURPOSE OR IMPLEMENTATION BY ANY HEALTHCARE OR PROVIDER ENTITY.

Salesforce, Health Cloud, Service Cloud and others are among the trademarks of salesforce.com, Inc., and are used here with permission. HEDIS is a registered trademark of The National Committee for Quality Assurance.